





## It all started with a chopping board.

Twin brothers, Antony and Richard Joseph, grew up in a family with a long history of design and manufacturing. Originally set up by their grandfather in the 1930s, the family business specialised in the production of glass components and the brothers spent part of their summers working in the factory.

In 1999, having both trained in product design, the twins embarked on their early careers. As a sideline to their jobs, and with the support of their father, they utilised the capabilities of the factory in Birmingham to develop their own range of contemporary glass chopping boards.

But what started out as a fun project soon became the seed of a new business idea. After early success with their bold, colourful designs their entrepreneurial spirit kicked in and, in 2003, the Joseph Joseph brand was born.

Whilst glass chopping boards were just the start, the brothers were also designing other innovative kitchenware products and this gradually developed into a broader range of housewares.

What quickly became a key foundation of the brand was a simple observation - many tasks around the home could be made much easier and more enjoyable with a little intelligent thinking. It was this problem-solving approach, and the ability to combine it with a distinctive design aesthetic, that created some of their most iconic kitchenware and has made Joseph Joseph one of the world's most progressive houseware brands.

There's something special about a Joseph Joseph product that sets it apart from the competition. First it engages you with its distinctive design; then it captivates you with its functional benefits; finally, it assures you with its high-quality materials and attention to detail.

Joseph Joseph's ability to blend innovative design, contemporary styling and a distinctive use of colour is unique within the industry. While many brands concentrate on just one of these aspects, Joseph Joseph focuses on the whole user experience - creating products that work beautifully and are a pleasure to have around the home.

Since 2003 the brand has expanded successfully into many product areas and it continues to explore new houseware categories. It may have all started with a simple glass chopping board, but Joseph Joseph is now one of the fastest growing companies in the worldwide housewares market and it continues to earn accolades and awards for its unique, innovative designs.



# Fresh thinking for a changed world.

Home has never been more important than now.

The past 2 years have seen many of us forced to spend much more time inside than we would have ever thought possible.

Living rooms, bedroom and kitchens have become makeshift offices, trips away have been cancelled and staying-in has become the new normal for many.

If this has taught us anything, it's just how vital a well functioning home is and how important it is for the objects within it to perform efficiently.

At Joseph Joseph, we've always been passionate about inventing housewares that improve the simple, everyday tasks we all encounter.

Whether it's preparing a meal, organising the kitchen and bathroom or dealing with waste, we've always looked for ways to make these tasks easier or more enjoyable to do.

And this season is no exception.

We're excited to say we're launching GoRecycle, an exciting range of products designed specifically to make organizing and storing recycling at home hassle free. Comprising clever caddies and a smart recycling collector, the range is perfect for use in kitchens or utility rooms.

Add to this our existing range of inventive waste and recycling bins - along with the all-important liners and accessories - and you've got a comprehensive range of waste management solutions to choose from.

It's been a challenging period for all, with the retail and the housewares industries no exception. But at Joseph Joseph we believe that adversity also offers opportunities - the chance to challenge the status quo, to be creative and to do things better.

In short 'fresh thinking', which is at the core of our approach and which, we hope, delights customers and consumers alike.

*Antony & Richard Joseph*

# Waste & Recycling

## GoRecycle Portable recycling caddies

Design registered

We're all conscious of the need to recycle more, but the extra effort to separate, compact and store waste ready for collection can be a hassle and often creates more mess and clutter. That's why we created GoRecycle, a range of inventive products specifically designed to make home recycling quicker and easier.

It's easy to pre-sort, store and transport recycling with these smart, compact caddies. They are divided into two compartments allowing you to separate different types of recycling - such as glass and paper - with lids that close to hide the contents of each side. These lids, when opened together, create a handle making it very easy to transfer recycling to a larger bin kerbside or elsewhere. The two compartments can then be emptied independently by simply folding both lids to each side in turn, which traps the waste in one side as you empty the other.

Wash by hand with hot, soapy water. To help remove unpleasant odours, a solution of baking powder and water may also be used.

Available in two sizes - 14-litres (3.7 US Gallons) and 28-litres (7.4 US Gallons).



Lift lids to create a convenient carry handle



Dual compartments for easy separation



Lids hide unsightly waste



Video



GoRecycle 14-litre caddy  
**(30109)**  
**Dimensions** H36.5 x D25 x W25 cm  
(H14.4 x D9.8 x W9.8 inches)



Video



GoRecycle 28-litre caddy  
**(30110)**  
**Dimensions** H39.5 x D25 x W44 cm  
(H15.6 x D9.8 x W17.3 inches)

## GoRecycle Recycling collector

Design registered

Empty recycling less often with this simple but effective design. It comprises a large 32-litre compartment with a clip-on lid featuring one-way flaps that help trap items as they are pushed in, allowing you to fit more in without it popping back out again. Particularly suitable for a mix of plastic, card and paper waste, you can fit up to twice as much crushable waste inside, as a similar sized bin. If used with a plastic liner, the deep rim of the lid helps hide any unsightly bag overhang and also makes it very easy to carry. To empty, simply unclip the lid to tip into a communal bin or to remove a full plastic liner. Ideal for fitting a large amount of recycling in a compact space.

Wash by hand with hot, soapy water. To help remove unpleasant odours, a solution of baking powder and water may also be used. Not suitable for use with glass.

Capacity: 32-litre (8.4 US Gallons).



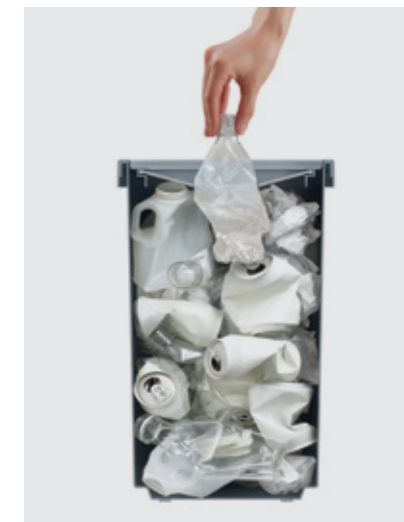
Holds up to twice as much crushable waste as a similar-sized bin



Video



GoRecycle 32-litre collector  
**(30111)**  
**Dimensions** H41 x D25 x W47 cm  
(H16.1 x D9.8 x W18.5 inches)



One-way lid flaps help trap items inside

## GoRecycle Recycling collector & caddy set

Design registered

Set includes one 14-litre caddy and one 32-litre collector.

Ideal for storing in a cupboard or utility room, both items stack neatly together giving you a large amount of recycling volume in a very compact space.

Capacity: 46-litre (12.1 US Gallons).



Caddy features dual compartments for easy separation and lids that create convenient carry handle



Easy to empty each side independently and ideal for glass, paper, metal and plastic



GoRecycle 46-litre set  
**(30112)**  
**Dimensions** H74.5 x D25 x W47 cm  
(H29.3 x D9.8 x W18.5 inches)



Video



## Totem Waste & recycling units

Design by PearsonLloyd  
Design registered

Totem is an award-winning design that combines all your waste and recycling in one compact unit. It features two compartments arranged vertically, which saves space and makes them very easy to fill and empty. Each compartment has a removable bucket that can be fitted with a single standard liner for general waste or two smaller bags, using the integrated bag hooks, for separating different types of recycling. Breather vents in the bucket sides make removing a full liner easier.

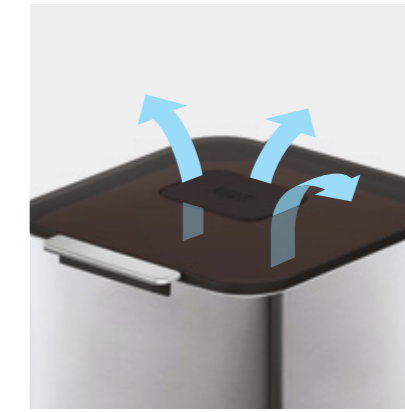
Totem also features a ventilated odour filter in the main lid that helps reduce moisture and odour build up from waste. The design comes with a 3-litre (0.8 US Gallon) removable food waste caddy that can be stored in either compartment, or on the worktop. Stylish, practical and durable, Totem is available in two sizes - Totem Max (60 litres/15.8 US Gallons) and Totem Compact (40 litres/10.5 US Gallons). Custom-fit liners for the main compartments and compostable liners for the food waste caddy are available separately, as are replaceable odour filters. Stainless-steel versions feature a fingerprint-proof coating, whilst other models feature an easy-clean powder-coated steel finish.

Choose the right custom-fit liner: Totem Max (60L) - IW2 and IW6; Totem Compact (40L) - IW2 and IW7.

10-year guarantee. External surfaces: Wipe clean with a damp cloth and then dry with a soft, dry cloth.



Top and bottom buckets are interchangeable and feature angled corners to allow easy removal



Integrated odour control using a replaceable activated carbon filter



Removable bucket with liner retaining holes and carrier bag hooks



Totem Max (60L)  
**(30060)** Stainless steel  
Dimensions  
H81.4 x W39 x D36.6 cm  
(H32 x W15¼ x D14½ inches)



Totem Compact (40L)  
**(30063)** Stainless steel  
Dimensions  
H76 x W30 x D36.6 cm  
(H30 x W11¾ x D14½ inches)



Totem Max (60L)  
**(30062)** Graphite  
Dimensions  
H81.4 x W39 x D36.6 cm  
(H32 x W15¼ x D14½ inches)



Totem Compact (40L)  
**(30065)** Graphite  
Dimensions  
H76 x W30 x D36.6 cm  
(H30 x W11¾ x D14½ inches)



2 compartments for separating waste & recycling



Unique vertical design maximises capacity in a compact space



3-litre removable food waste caddy with lid



Totem Max (60L)  
**(30061)** Stone  
Dimensions  
H81.4 x W39 x D36.6 cm  
(H32 x W15¼ x D14½ inches)



Totem Compact (40L)  
**(30064)** Stone  
Dimensions  
H76 x W30 x D36.6 cm  
(H30 x W11¾ x D14½ inches)



Totem metal floor-standing merchandise (subject to availability - stock not included)  
**(991001)** Kit code  
Dimensions  
H150.4 x W50.5 x D49.1 cm  
(H59¼ x W19¾ x D19½ inches)



Video



Totem Max



Totem Compact



## Totem Pop Waste & recycling units

Design by PearsonLloyd  
Design registered

Totem Pop combines all your waste and recycling in one compact unit and features two compartments arranged vertically, which saves space and makes them very easy to fill and empty. The top compartment has a removable bucket with breather vents in the sides that make removing a full liner easier. The bottom compartment can be pulled out completely and features a removable rim that hides any untidy liner overhang. Both compartments can be fitted with a single liner for general waste but also feature integrated bag hooks allowing you to divide the space with two smaller bags for separating different types of recycling. Totem also features a ventilated odour filter in the lid that helps reduce moisture and odour build-up from waste. Stylish, practical and durable, Totem Pop is available in two sizes - 60L and 40L. Custom-fit liners for the top compartment are available separately, as are replaceable odour filters. Choose the right custom-fit liner: Totem Pop (60L) - IW6; Totem Pop (40L) - IW7.

10-year guarantee. External surfaces: Wipe clean with a damp cloth and then dry with a soft, dry cloth.



Removable bucket with liner retaining holes and carrier bag hooks



Integrated odour control using a replaceable activated carbon filter



2 compartments for separating waste & recycling



Video



## Titan Trash compactors

Design registered

Titan is no ordinary waste unit. It features a patented, hygienic compaction system that enables it to hold up to 3 times more waste than a similar-sized domestic unit. Because Titan compacts your waste, it doesn't need to be emptied as often, which in turn reduces the amount of liners you use and also the amount of full liners that you have to deal with between collections.

Titan is built to last. Its compaction system and foot pedal have been tested over 100,000 times and are engineered to withstand repeated downward force. It's hygienic and mess-free too. The unique design ensures only the inside of the plastic liner touches the trash whilst compacting, leaving you with clean hands and a clean bin. It also features a replaceable odour filter for any unpleasant smells and a fingerprint-proof stainless-steel coating.

With Titan you can compact with confidence. It has an anti-tear design that won't stretch or pinch the liner and it has its own extra-strong, custom-fit liners for added peace of mind. It's also compatible with standard plastic liners.

A handy lid-stay feature ensures liner changes are quick and hassle-free, and it also includes a handle on the reverse to make moving easy.

Available in a range of sizes and finishes. 10-year guarantee.



Titan 30  
**(30030) Stainless**  
**Dimensions**  
H68.5 x W39 x D33.8 cm  
(H27 x W15¼ x D13¼ inches)



Titan 20  
**(30037) Stainless**  
**Dimensions**  
H68.4 x W30.2 x D34.4 cm  
(H27 x W12 x D13½ inches)



Hygienic compaction system



Video



reddot design award



gia global innovation awards  
honoring housewares  
product design excellence



Replaceable odour filter



Before



Compact



After

### Stack 4 Food waste caddy with odour filter

Design by PearsonLloyd  
Design registered

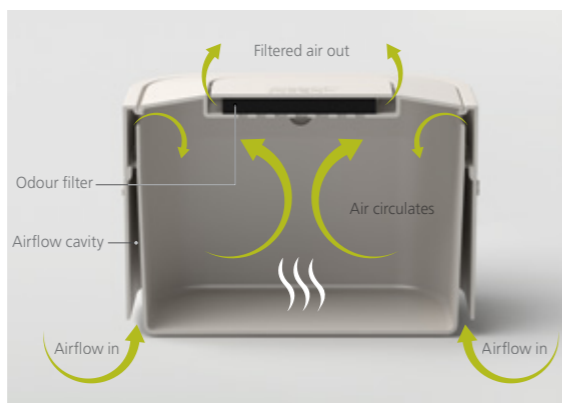
This clever caddy has been carefully designed to help reduce the smell from collected food waste. It has a unique, ventilated design that allows air to enter and circulate inside the caddy, which helps to reduce moisture - the main cause of unpleasant odours from decomposing food.

In addition, it features a replaceable odour filter in the lid that works in tandem with the fresh air to help trap any smells that do occur. It has an easy-clean polypropylene body, a flip-top lid and a sturdy stainless-steel carry handle. A liner-retaining hole inside ensures any liners stay in place and the rim of the removable lid hides any untidy bag overhang. Perfect for storing on a kitchen worktop. Custom-fit, compostable liners (IW2) are available separately for the perfect fit.

Total capacity: 4L (1 US Gallon).  
Wash by hand with hot, soapy water.



Store on the worktop



Ventilated design reduces moisture and odours



Replaceable odour filter



### Compo™ 4 Easy-fill food waste caddy

Design registered

This slimline food waste caddy has been specifically designed to make collecting food scraps easier. It features a convenient flip-up lid and an extra-wide aperture, ideal for capturing food waste scraped directly from plates. An adjustable air vent in the lid can be opened to allow moisture to escape - thereby reducing odour build up - or closed to provide a barrier to insects in hotter climates. The slender design is perfect for storing on the worktop or inside a cupboard and it comes with its own bracket for mounting on a cupboard door. Suitable for use with Joseph Joseph IW2 custom-fit liners.

Wash and dry by hand.



Slimline design perfect for storing on the worktop or inside cupboards



Stack 4  
**(30015)** Stone  
**(30016)** Graphite  
**Dimensions** H23 x W20 x D16 cm  
(H9 x W7¾ x D6¼ inches)



Compo™ 4 with bracket  
**(30046)** Stone  
**(30107)** Graphite  
**Dimensions** H23 x W20 x D16 cm  
(H9 x W7¾ x D6¼ inches)



Adjustable air vent: Open - helps reduce moisture and odour build-up; Closed - provides insect barrier



## IntelligentWaste™ Accessories

### Totem 60 & 48 models



**IW1**  
 Custom-fit liners  
 Capacity: 24-36 litres  
 (6.3 - 9.5 US gallons)  
 Pack size: 20  
**(30006)**  
**Dimensions**  
 H32 x W20.5 x D3 cm  
 (H12½ x W8 x D1 inches)

### Food waste caddies



**IW2**  
 Custom-fit food waste caddy liners  
 Capacity: 4 litres (1 US gal.)  
 Pack size: 50  
 100% Compostable  
**(30007)**  
**Dimensions**  
 H36 x W14.5 x D2 cm  
 (H14 x W5¾ x D¾ inches)

### Totem Max & Totem Pop 60L models



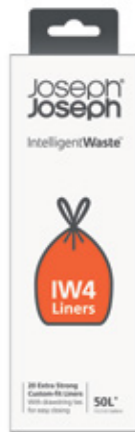
**IW6**  
 Extra strong custom-fit liners  
 Pack size: 20  
 Capacity: 30 litres (7.9 US gal.)  
**(30058)** Grey  
**(30118)** Transparent  
**Dimensions**  
 H31.5 x W20.5 x D4 cm  
 (H12½ x W8 x D1½ inches)

### Totem Compact & Totem Pop 40L models



**IW7**  
 Extra strong custom-fit liners  
 Pack size: 20  
 Capacity: 20L (5.2 US gal.)  
**(30059)** Grey  
**(30119)** Transparent  
**Dimensions**  
 H31.5 x W18 x D4 cm  
 (H12½ x W7 x D1½ inches)

### Titan 30 models



**IW4**  
 Extra strong custom-fit liners  
 Pack size: 20  
 Capacity: up to 90 litres  
 (23.7 US Gallons)  
**(30027)** Grey  
**(30033)** Transparent  
**Dimensions**  
 H23 x W8 x D8 cm  
 (H9 x W3¼ x D3¼ inches)

### Titan 20 models



**IW5**  
 Extra strong custom-fit liners  
 Pack size: 20  
 Capacity: up to 60 litres  
 (15.8 US Gallons)  
**(30028)** Grey  
**(30029)** Transparent  
**Dimensions**  
 H23 x W8 x D8 cm  
 (H9 x W3¼ x D3¼ inches)



**Replacement odour filters**  
 Pack size: 2  
**(30005)**  
**Dimensions**  
 H17 x W11 x D2 cm  
 (H6½ x W4¼ x D¾ inches)

# Merchandisers & POS



## Merchandisers & POS

Convenient, countertop and free-standing merchandising units are available for many of our products. See our price list for more details (conditions apply).



Totem metal floor-standing merchandiser (subject to availability - stock not included)  
**(991002)** Kit code  
**Dimensions**  
 H150.4 x W50.5 x D49.1 cm  
 (H59¼ x W19¾ x D19½ inches)

We are proud to have won the following awards:



Joint Winner - Emerging Entrepreneur of the Year



Winner 2014 - TriScale™



Winner 2011 - Pie™. Winner 2010 - Y-Grinder™. Winner 2010 - Hands On™. Winner 2009 - Nest 8™.



Winner 2018 Flex™. Winner 2018 Titan. Winner 2015. Winner 2014. Winner 2013. Winner 2012. Winner 2011.



Winner Gold 2013 - TriScale™. Winner Silver 2013 - DrawerStore™ Cutlery Tray.



Winner 2012 - No-spill Mill™



Winner 2009 Kitchenware - Nest 8™. Winner 2009 Food Preparation - Folding Colander.



Winner 'Prix' 2015 - Totem. Winner 'Grand Prix' 2015 - Totem.



Winner 2021 Gadgets - Multi-Prep™. Winner 2020 Product Development. Winner 2015 Housewares - Totem. Winner 2015 Innovation Award - Totem. Winner 2014 Innovation Award. Winner 2013 Innovation Award. Winner 2013 - Wash&Drain™. Winner 2012 Innovation Award. Winner 2011 Innovation Award. Winner 2009 Innovation Award. Winner 2009 - Nest 8™. Winner 2008 Cutting Edge Award - Index™.



Winner 2012 - Nest™ 9 Plus. Highly Commended 2012 - Arena™. Winner 2011 - Pie™. Highly Commended 2011 - Rocker™. Winner 2010 - Hands On™. Highly Commended 2010 - Y-Grinder™. Winner 2008 - Index™.

## Contact us

### UK

Trade customer enquiries and ordering  
[sales@josephjoseph.com](mailto:sales@josephjoseph.com)

General account enquiries  
[accounts@josephjoseph.com](mailto:accounts@josephjoseph.com)

General enquiries  
[info@josephjoseph.com](mailto:info@josephjoseph.com)

Press enquiries  
[pr@josephjoseph.com](mailto:pr@josephjoseph.com)

Joseph Joseph Ltd.  
 100 Union Street  
 London, SE1 0HS  
 United Kingdom

Tel: +44 (0)20 7261 1800  
[info@josephjoseph.com](mailto:info@josephjoseph.com)

[josephjoseph.com](http://josephjoseph.com)

### USA

Trade customer ordering and press enquiries  
[customercare@josephjoseph.com](mailto:customercare@josephjoseph.com)

Joseph Joseph Inc.  
 41 Madison Avenue  
 15th Floor  
 New York  
 NY 10010

Tel: +1 917 338 0900  
 Fax: +1 917 338 0912  
[customercare@josephjoseph.com](mailto:customercare@josephjoseph.com)

[josephjoseph.com](http://josephjoseph.com)



This catalogue is printed with vegetable based inks on carbon balanced paper. Please recycle.

The contents of this catalogue are correct at time of publication. Joseph Joseph reserves the right to make changes from time to time, without notice or obligation, to specifications, colours or materials and to change or discontinue models. Some products or features may not be available in all markets.

Photography by Charlie Bettinson, Steve Wakeham and Perry Curties.



Joseph Joseph Ltd.  
100 Union Street  
London SE1 0NL  
info@josephjoseph.com

Joseph Joseph Inc.  
41 Madison Avenue  
15th Floor  
New York NY10010  
customercare@josephjoseph.com

Joseph Joseph SARL  
111, avenue Victor Hugo  
75116 Paris  
renseignements@josephjoseph.com

Joseph Joseph  
Deutschland GmbH  
Königsallee 92a - 4.Stock  
40212 Düsseldorf  
information@josephjoseph.com

Joseph Joseph 株式会社  
Tel. 0570-031-117  
カスタマーサービス受付時間:  
10:00-12:00 / 13:00-18:00  
(土・日・祝日・休業日を除く)

Joseph Joseph (Shanghai) Trading Ltd.  
杰膳 (上海) 贸易有限公司 上海浦东栖霞路  
16弄3号楼11层133室  
saleschina@josephjoseph.com

Joseph Joseph Pty Ltd.  
14/5 Martin Place  
Sydney  
NSW, 2000  
anzsales@josephjoseph.com

[josephjoseph.com](https://josephjoseph.com)